

adf

architectsdatafile.co.uk

12.20



WOODCOTE HOUSE, UPHAM

A precisely-detailed minimalist home with vernacular materials to help it blend into its rural setting

THE OLD DAIRY, BLOOMSBURY

Stanhope Gate's quirky north London mixed use scheme

INTERNATIONAL FOCUS

Showcasing the latest projects from around the world – visit www.architectsdatafile.co.uk for full information



THE VILLAGE, JOHNS HOPKINS UNIVERSITY, BALTIMORE BIG-BJARKE INGELS GROUP

BIG has been selected as the designer of the new Student Centre for Johns Hopkins University, in Baltimore, Maryland. The competition-winning design for 'The Village' is an "open, modern facility envisioned as a social engagement hub for all members of the Hopkins community," said the architects. The 150,000 ft² building negotiates the sloping grade of the site to allow direct entry from all four levels, while maintaining and providing several accessible routes. The entrance will open into a "cascading interior landscape of dining, performance, lounging, and socialising." The mass timber structure will provide a warm and acoustically comfortable environment as light filters in between the photovoltaic roof panels, which will help to meet the university's larger sustainability goals. The new Student Centre will satisfy the university's "long-acknowledged need for a true non-academic gathering spot," and is set to be completed by autumn 2024.



SHUIFA INFO TOWN PROPERTY EXHIBITION CENTRE, CHINA AOE

The main structure of the ShuiFa Info Town Property Exhibition Centre, in Jinan, is assembled from white perforated panels and was designed "like a mountain waterfall, combined with green microtopography" said the architects, to give the building "refinement and cultural significance." A second layer is set outside the main structure, enveloping the building within the perforated plating. The curtain wall sections are slanted, and interlaced inside, and the gap between the sections forms the entrance. The interior of the building is obscured by the white perforated plating, and as night falls, lighting shines through the perforated plates.



GRAND MOSQUE PRAYER HALL, ALGERIA KSP JÜRGEN ENGEL ARCHITEKTEN

KSP Jürgen Engel Architekten has announced the completion of the Prayer Hall of the Grand Mosque in Algiers, the world's third largest mosque. The interior of the Prayer Hall with its central dome is also divided by pillars, which reach heights of up to 45 metres; the space is able to host up to 36,000 worshippers. Aside from the dome, which measures 50 metres in diameter and reaches a height of 70 metres at its apex, the major landmark of the complex is the minaret, which soars to 265 metres, making it not only the highest structure in Africa, but also the tallest minaret in the world.



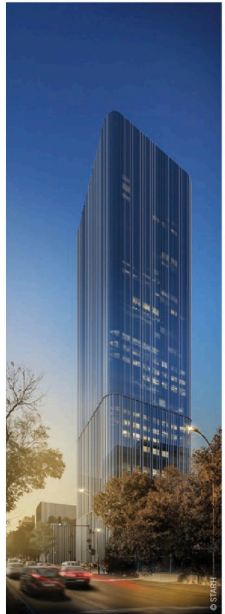
AQUATICUM WATERPARK, HUNGARY BORD ARCHITECTURAL STUDIO

Aquaticum Waterpark in Debrecen, designed by BORD Architectural Studio, has reopened as a "unique multidimensional waterpark" whose design focuses on the "life-giving aspect of water and a forest environment." Water and flora appear on both horizontal and vertical surfaces and create an unusual composition of spaces which "introduce the visitors into this water world in a truly unique way," said the architects. The long, single-storey entrance connects a new pedestrian pathway and the waterpark like a bridge. The entrance building includes the changing rooms, the restrooms, the shops and a colourful food court. The long, flat volume of the building "settles in the landscape," and the building's green roof resembles the shape of a wave.



MITOSIS, AMSTERDAM GG-LOOP & ARUP

GG-Loop, working alongside Arup, have released their vision for Mitosis, a "multi-functional regenerative collective housing complex" in Amsterdam. GG-Loop's vision was to "deepen the understanding of the relationship with nature" in the design of the complex, which will be composed of prefabricated CLT modules, and explores how buildings can "grow, evolve, heal and self-sustain." Due to its flexible structure and grid formation, Mitosis will be able to host a variety of typologies that are customisable to the residents' needs. The complex is made up of a combination of off-grid single-family detached houses and high-density mixed-use urban clusters that incorporate public functions such as education, leisure, wellness, and retail. Mitosis will generate spaces that "respect both the environment and its inhabitants, reconnecting both in a balanced ecosystem."



ASTRAL TOWER, BULGARIA STARH

Astral Tower by STARH is the tallest building in Varna, Bulgaria, reaching 140 metres. The mixed-use project's design was developed in two volumes of a similar size – a horizontal and a vertical one. The building's rounded corners and attenuated vertical tectonics "give the illusion of a disappearing building silhouette," said the architects. The facade has integrated LED lighting strips along all vertical elements, and using light design and engineering they are turned into changing abstract animations and light shows at night. The "classic structural scheme of a tube in a tube" allows for a full 360-degree view from all 40 floors of the Black Sea and the city.