

WABISABI



2023 NOV/DEC

尚藝設計 | 隱作設計 | 橫山里自然空間實驗室 | 佐恩空間 | 大向設計 | 杉居建築 + 深培設計
小籽設計 | NNEE Studio | TAKK | PMMT Arquitectura | Jean Verville architectes
Brad Swartz Architect | Zaha Hadid Architects | IAAC | Zeller & Moya



RESIDENCE / MEV CABIN



Studio Jean Verville architectes

住宅 / MEV 森林木屋

設計團隊 · Design Team

Studio Jean Verville architectes: Jean Verville / Tania Paula Garza Rico / France Goneau / Rémi St-Pierre
MA architecture: Samuel Landry / Camille Asselin / Jacob Éthier / Bahia Burias



整理 · Collator 賴姿穎 · Lisa Lai
 文字 · Text Studio Jean Verville architectes
 攝影 · Photographer Maxime Brouillet / Maryse Béland

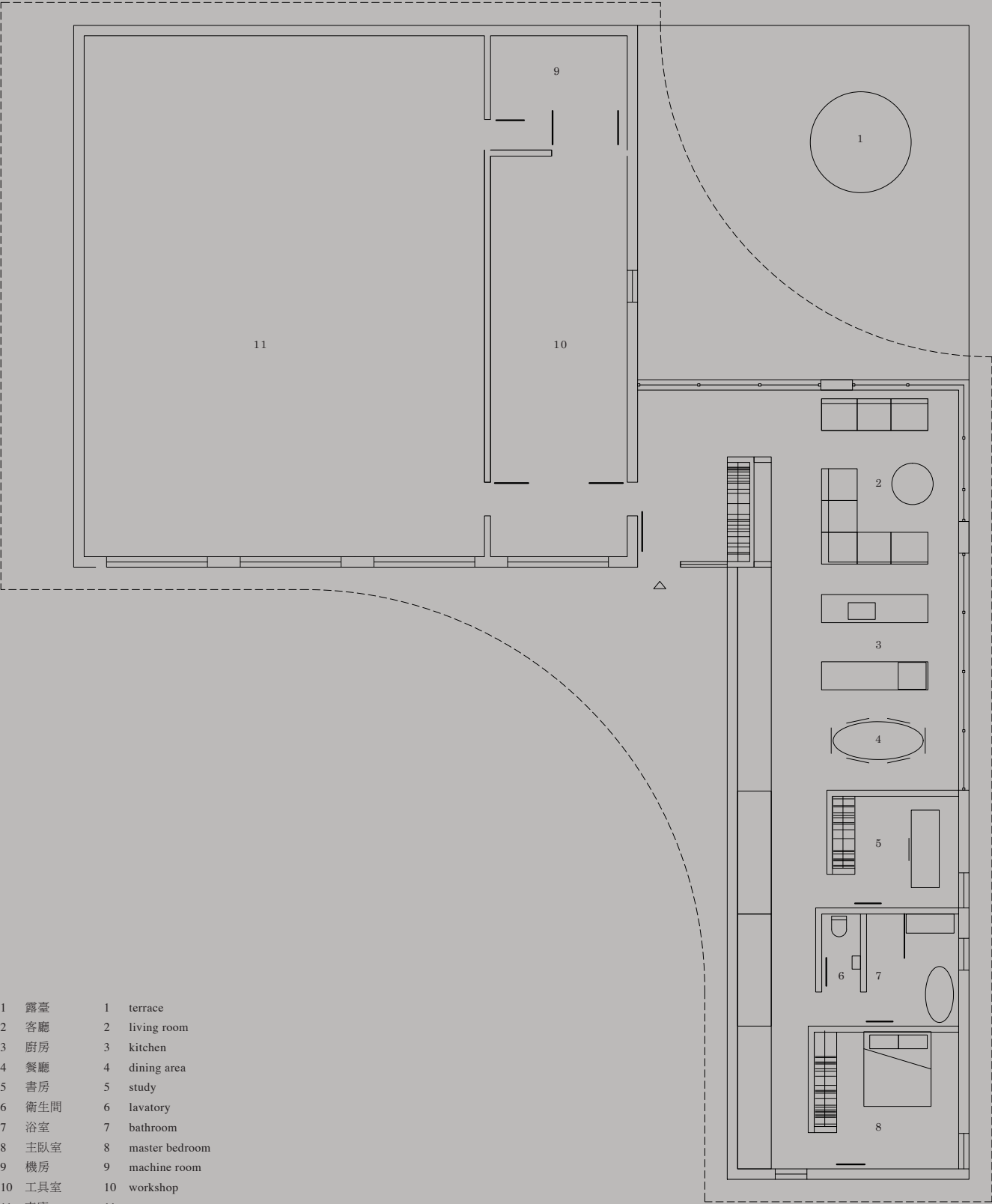
兩位喜好非凡的業主，他們熱愛八〇年代藝術與義大利設計，受到了 **Studio Jean Verville architectes** 展示的攝影敘述故事吸引，於是邀請建築師為他們設計在森林中的隱居之所。目標是將奇幻的氛圍注入他們的生活日常，要符合這個條件且兼顧居所的設計風格，這無疑是個衝突、具有顛覆性的挑戰。

這個專案實現了個性化的另類宇宙，汲取各自的創意、共同討論再結合娛樂化的方式設計，接著依循建築結構比例精準度的要求來建造。MEV 受到義大利曼菲斯設計集團（**Memphis**）的叛逆宇宙影響，利用幾何元素與大膽鮮明色彩的結合來規劃此案，與那個時代單色又單調的建築、設計風格形成極大對立。該專案以細緻的操作，點綴了八〇年代這個古怪宇宙，透過豐富多彩的視覺元素及對比關係，以團隊合作且趣味化的方式，傳達了業主的個性。為了融入周圍的自然，建築外觀以有機原始姿態展現，將建材訂製出弧形線條並以精準比例的施工方式，來建造這個住宅工作室。它的奢華體現在帶有圖形的室內設計中，主要選材方向以幾何的量體和閃耀大膽的色彩結構為主。

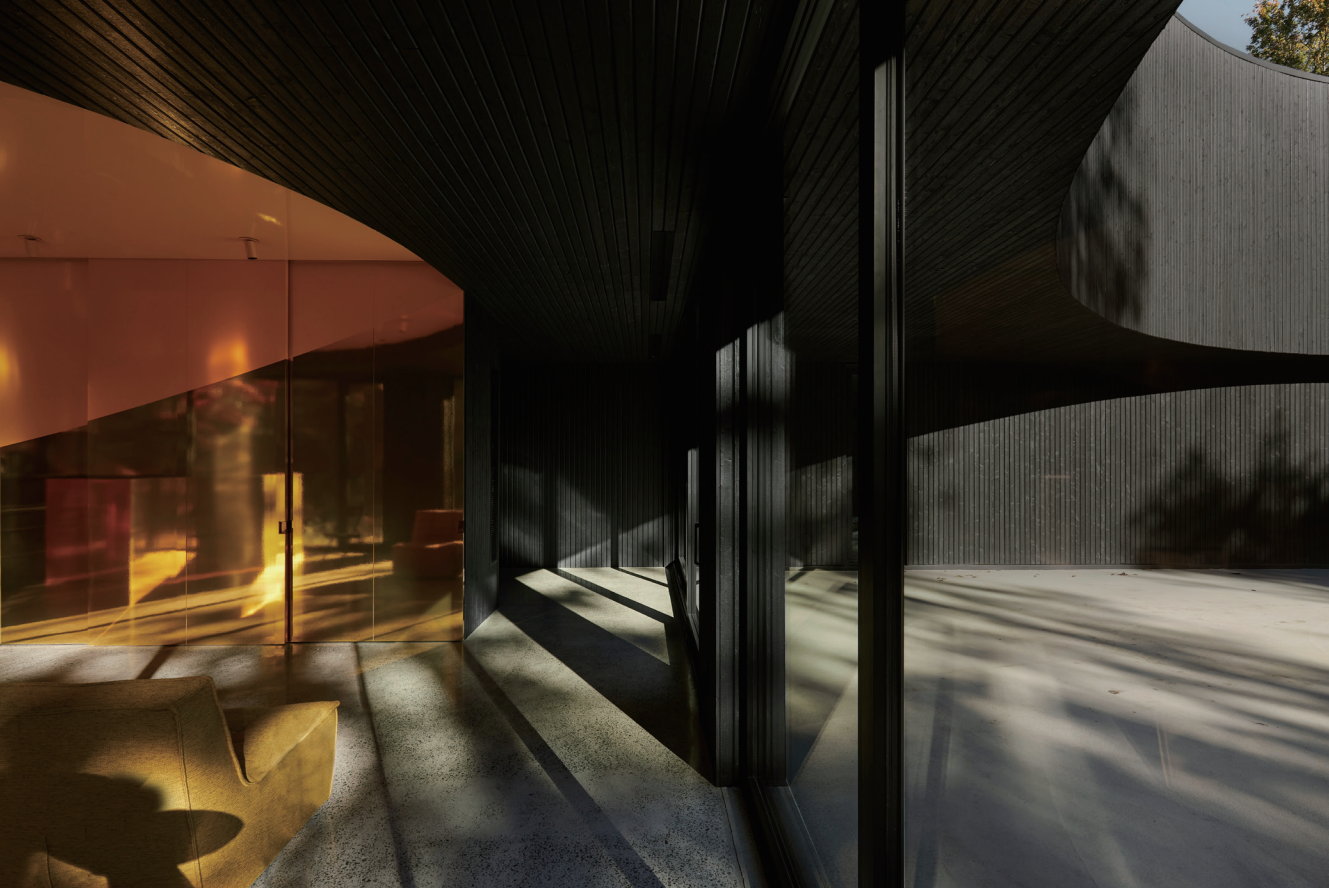


這個弧形曲線建築體的位置，是根據一條交錯縱橫的溪流所決定的。南側房間的線性佈局可以完整的擁有視野景觀和溪流，而北側是一個屋頂覆蓋著兩個獨立量體，與一個全玻璃的入口相連，看起來像是長型無窗立面牆。雖然看起來是一個整體建築，但透過屋頂軸線的移動被重新定義，這樣的設計創造峰迴路轉的新輪廓。外觀透過一系列的設計形式將其量體融合，隱藏了室內配置元素，解釋著建築結構的系統。室內空間表現則利用視覺衝撞的可能性，藉由光線反射在選材顏色和紋理上，猶如萬花筒般展開光線遊戲，而空間內陳列的量體與選材平面進行著形式上的對比，用元素、圖案和顏色的華麗來裝飾自己。勞倫蒂安森林是個大自然度假勝地，在這片夢幻大地上迎來了此住宅工作室，提供了一個自在且充滿活力的生活與工作場域。

平面圖 PLAN



- | | |
|--------|------------------|
| 1 露臺 | 1 terrace |
| 2 客廳 | 2 living room |
| 3 廚房 | 3 kitchen |
| 4 餐廳 | 4 dining area |
| 5 書房 | 5 study |
| 6 衛生間 | 6 lavatory |
| 7 浴室 | 7 bathroom |
| 8 主臥室 | 8 master bedroom |
| 9 機房 | 9 machine room |
| 10 工具室 | 10 workshop |
| 11 車庫 | 11 garage |



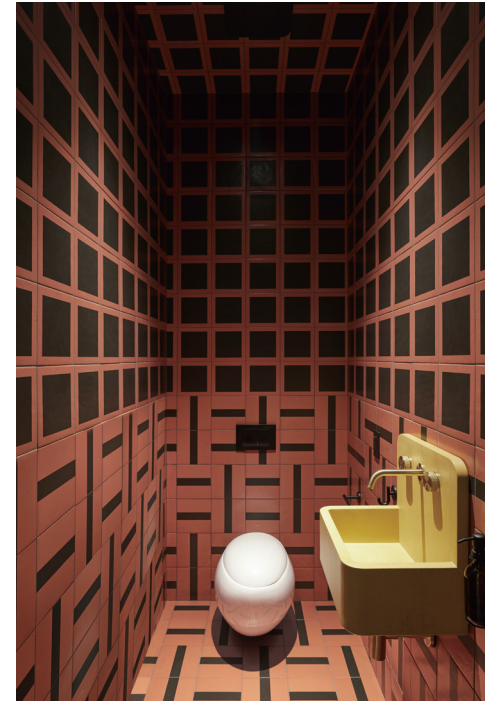
空間性質 住宅
空間面積 181 平方公尺
座落位置 加拿大勞倫斯蒂德

Character of Space Residence
Gross Floor Area 181 ㎡
Location Laurentides, Canada



Seduced by the photographic narration illustrating the projects of Studio Jean Verville architectes, two admirable eccentrics, passionate about art and Italian design of the 80s, invited him to design their refuge in the forest. The objective is to host their daily lives with a whimsical energy, a challenge in absolute cohesion with the disruptive approach of the Studio.

The project realizes a personalized alternative universe, designed in a collaborative spirit and a ludicization approach and then developed with architectural mathematical rigor. MEV exploits the association of geometries and colors under the impetus of the rebellious universe of the Italian group, Memphis, antithesis to monotony and the monochromatic architecture and design of his time. Constellated with metic-



ulous maneuvers that evoke this wacky universe of the 80s, the project celebrates a multiplicity of references in a system of expressive and contrasting relationships in order to communicate the personalities of the owners. For the sake of integration into surrounding nature, this house-studio reveals an organic form and a raw appearance, confronting its materials with a set of curved lines in a meticulous implementation. Its extravagance manifests itself in interiors with graphics, where volumes and materials develop in a sparkling chromatic organization.

The location of this eclectic ensemble is determined by the presence of a stream that crisscrosses the land. On the south side, the linear layout of the rooms allows a constant view of the landscape and its stream. On the north side, two distinct volumes, connected by an entirely glazed entrance, appear like a long blind facade unified by a single roof. While an entirely mathematical logic of functionality invites the exclusion of roof surfaces in a Boolean diagram, its shape is redefined by a shift in the axis of the ridge, which thwarts the reading of the volumetry and animates the silhouette of a new complexity. Converging in a set of formal solutions, volumes conceal both storage and domestic elements to articulate a structured system. Playing with the possibilities of visual impact, the textures, colors, and materials exploit light in a kaleidoscopic reflection. Volumes and surfaces play games of formal opposition, adorning themselves with a panache of elements, patterns, and colors vying for traces of childhood. Quintessence of the getaway in nature, the Laurentian forest welcomes the house-studio on a parcel of its territory that has remained out of reach, providing a place of life and work, both vibrant and free.



ISSUE 12



ISSN 2790-0495

9 772790 049002

11

NT\$ 420